

State of Wyoming Corner Record

(in compliance with the CORNER PERPETUATION AND FILING ACT, Wyoming Statutes, 1997, Section 33-29-140, et. seq. and the Rules and Regulations of the Board of Registration for Professional Engineers and Professional Land Surveyors)

Reverse side of this form may be used if more space is needed.

Record of original survey and citation of source of historical information (if corner is lost or obliterated). Description of corner monumentation evidence found and/or monument and accessories established to perpetuate the location of this corner. Sketch of relative location of monument, accessories, and reference points with course and distance to adjacent corner(s) (if determined in this survey). Method and rationale for reestablishment of lost or obliterated corner.

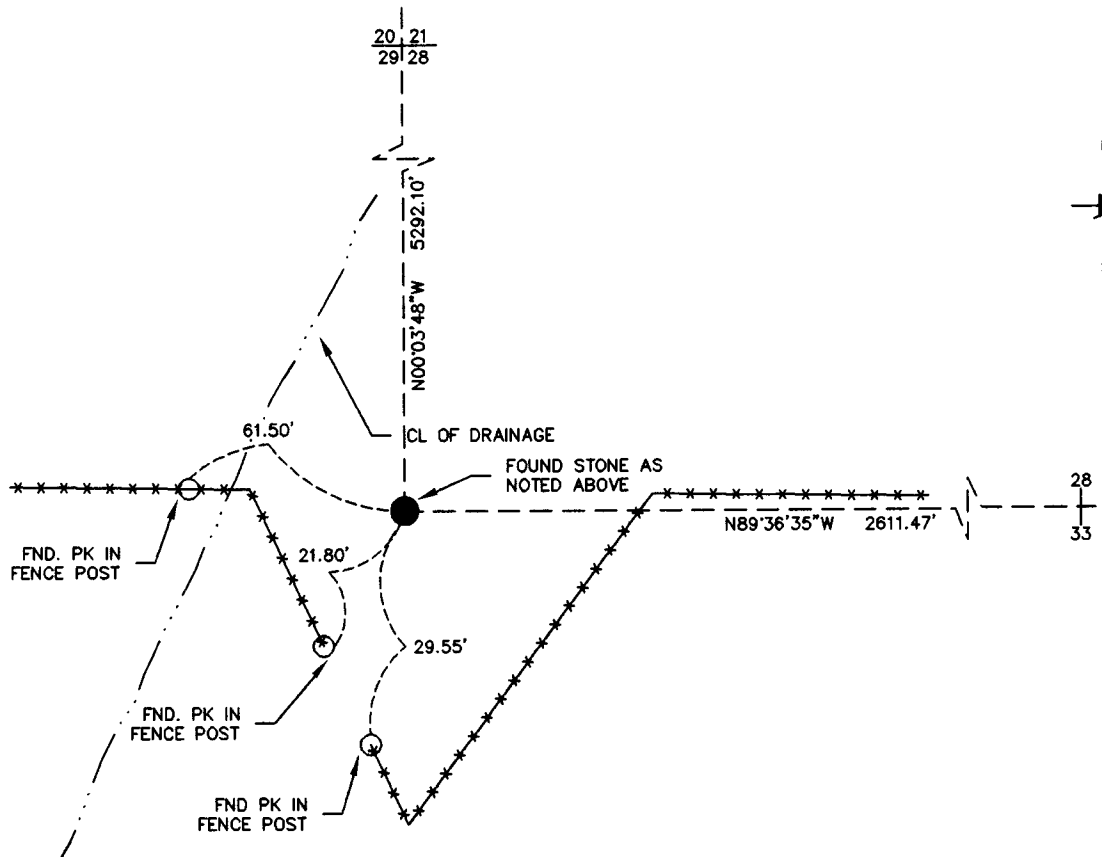
FOUND: WELL SET GRANITE STONE: ONE MARK ON SOUTH SIDE AND 3 MARKS ON EAST SIDE, SET 4" ABOVE GROUND, 8" WIDE E\W AND 6" N\S.

G.L.O. RECORD: GRANITE STONE 18" x 12" x 7"

SET: NOTHING

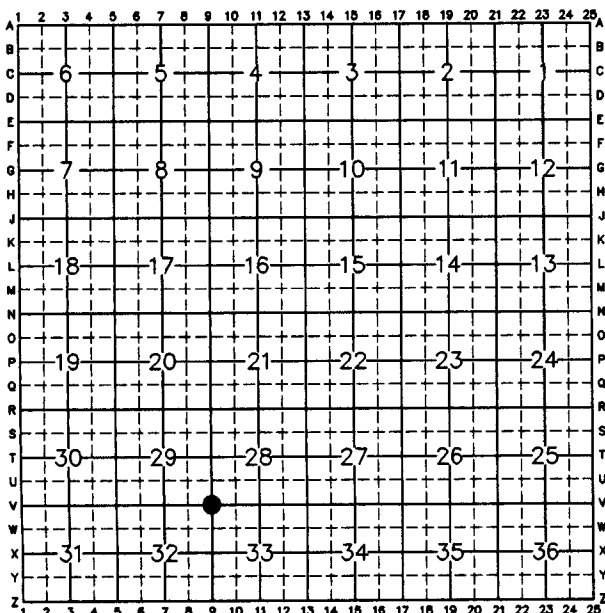
RECORDED 12/31/2003 AT 1:38 PM REC# 375042 BK# 1784 PG# 1245
DEBRA K. LATHROP, CLERK OF LARAMIE COUNTY, WY PAGE 1 OF 1

REFERENCES: SET AS SHOWN



Date of Field Work: 12-03 Office Reference: 2-2389.03

CROSS INDEX DIAGRAM



Firm/Agency, Address

Cotton D. Jones, P.L.S.
A.V.I., p.c.
2035 Westland Road
Cheyenne, WY 82001
Telephone Number: (307) 637-6017

This corner record was prepared by Bruce Perryman under my direction and supervision.

SEAL & SIGNATURE

